

PRIMOS LED5

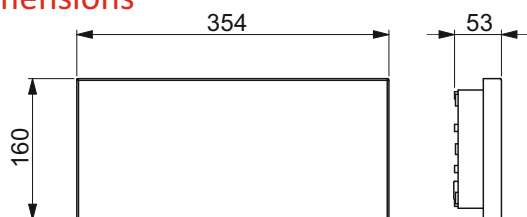
Emergency lighting luminaire



CE IP65



Dimensions



Casing

Body material: plastic
Casing colour: white - RAL 9003
Lamp cover material: plastic
Lamp cover: mat or transparent

Available versions

Please check the details on next pages.

Mounting types

Please check the details on next pages.

General purpose

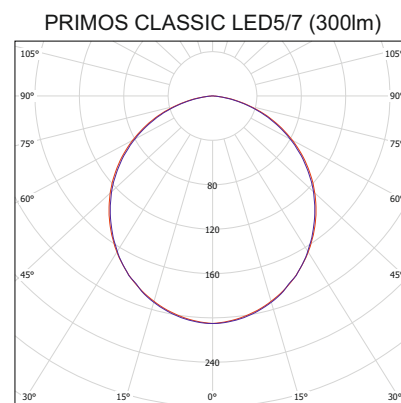
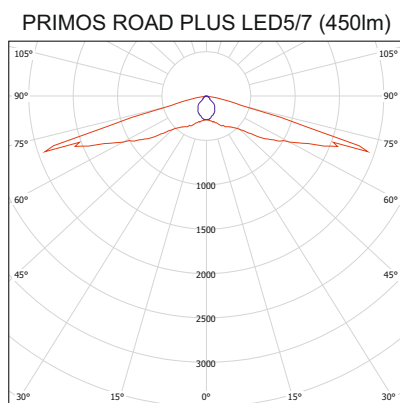
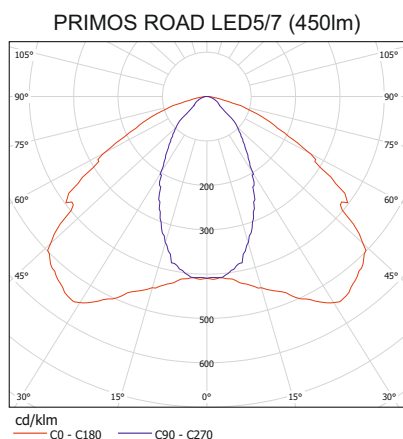
Primos LED, equipped with LED light source, is a highly efficient luminaire designed for emergency lighting. Its main task is to illuminate emergency escape routes, emergency escape exits and rooms in public facilities, work places, etc. It is compatible with all emergency lighting systems offered by Hybryd.

Technical data

CATEGORY		VALUE		
		PRIMOS LED5	PRIMOS LED5 T	PRIMOS LED7
Power supply		230V AC 50-60Hz		
Power consumption	maintained	< 11,5VA	< 11,7VA	< 11,5VA
	non-maintained	< 5VA	< 5,2VA	< 5VA
Power consumption of the heater (for 20°C)	after switching		< 20W	
	when the temperature reached		< 6W	
cos φ		0,5 - 0,7		
Protection class		I		
Protection degree		IP65		
Light source		LED Module ¹		
Light temperature		5700 - 6500K		
Luminous flux	PRIMOS ROAD	450lm		550lm
	PRIMOS ROAD PLUS			
	PRIMOS CLASSIC	300lm		360lm
Light source power		5W		7W
Light source lifespan		> 50 000h		
Accumulator type		Ni-Cd HT, Ni-MH HT		Ni-MH HT
Accumulator voltage		4,8V		8,4V
Accumulator capacity	t _{aw} = 1h	2,1 - 2,5 Ah		2,1 Ah
	t _{aw} = 2h, t _{aw} = 3h	4,0Ah		4,0Ah (2h)
Recharging time		24h		
Emergency work time		1h, 2h, 3h		1h, 2h
Ambient temperature		+10 - +35 °C	-20 - +35 °C	+10 - +35 °C
Connector	non-maintained	3x 0,5 - 2,5 mm ²		
	maintained	4x 0,5 - 2,5 mm ²		
Through connecting		YES		

¹⁾ - unchangeable light source

Light distribution diagrams



Versions - testing, monitoring

ST = Standard - emergency work test executed by turning off power supply

AT = Autotest - automatic and periodic test execution:

TEST A - lamp efficiency test, monthly;

TEST B - emergency work time measurement, annually;

CT = Centraltest - communication with the central unit or PC, full addressing of the luminaires, luminaires visualisation, system status reporting, many testing options, manual testing;

TS = Test System - communication with H-101TS central unit, many testing options, manual testing with the use of H-101TS central unit

CB = Central Battery - 220V DC power supply from central battery, built-in LED 220VDC ballast and LED module;

BU = Buffer Supply - luminaire adapted for 12-24V DC buffer feeders, built-in LED 12-24V DC ballast and LED module.

Functions

1. Automatic power supply switch: basic work/emergency work. (only ST, AT, CT and TS).
2. Luminaire and accumulator state indication (only ST, AT, CT and TS).
3. Supervision of 230V power supply voltage and accumulator condition (only ST, AT, CT and TS).
4. Deep accumulator discharge protection (only ST, AT, CT and TS).
5. Automatic test execution (only AT, CT and TS).
6. Light source work supervision.

Indication

The luminaire condition is indicated by LED. There is no LED indication during emergency mode:

Green - accumulator condition (only ST, AT, CT, TS)

Red - luminaire condition (only AT, CT, TS).

More details described in product manuals.

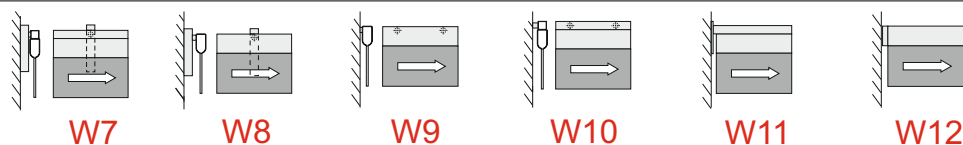
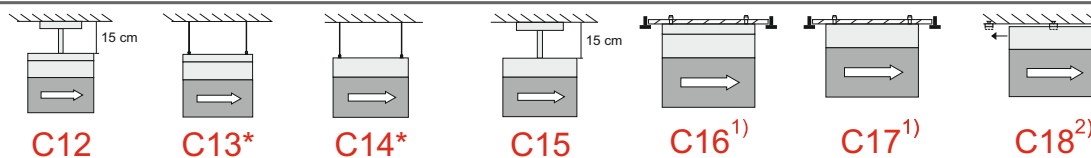
Lighting versions

Maintained (M) - basic lighting provided all the time (uses 230V); in case of power supply failure switches automatically into emergency mode (accumulator).

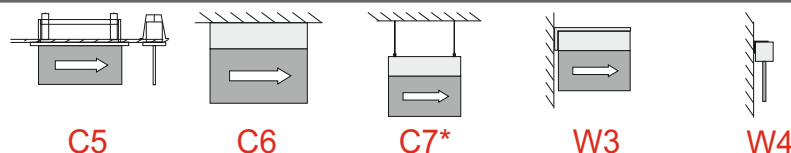
Non-maintained (NM) - standby mode as a standard (no lighting); in case of power supply failure switches automatically into emergency mode (accumulator).

Mounting types

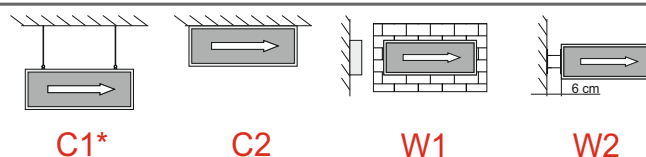
PROFIL



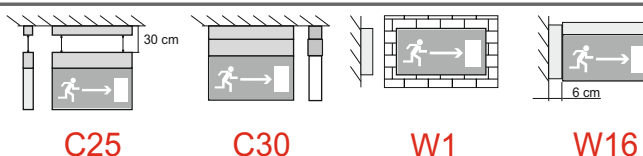
CRYSTAL



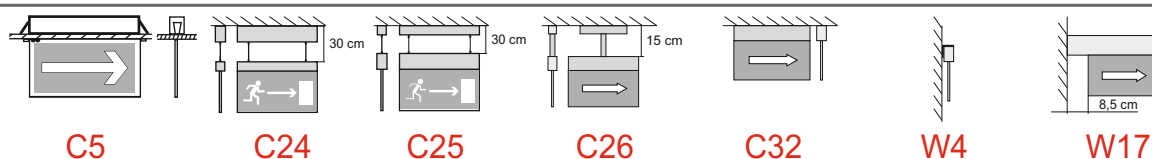
ALU



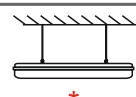
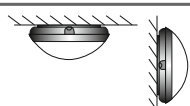
SPARK



PROFILIGHT



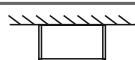
H-207 TELESTO



H-207 TCW060 & 216



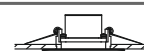
KWADRA ORBIT LED



KWADRA ORBIT LED



OWAATOM LED OWA POWER LED



OWA LED

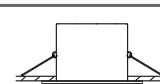
KWADRA N



W131

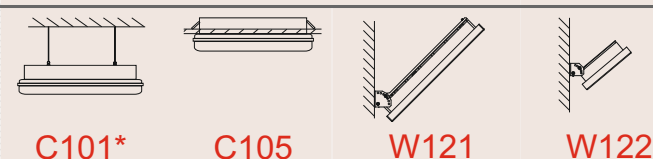


KWADRA P

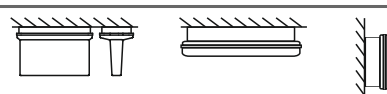


PRIMOS

PRYMAT



PRYMAT DW



ACCESSORIES

(ordered separately)

* Strings or chains available on request.

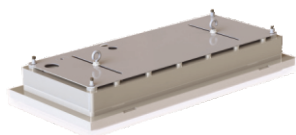
¹⁾ Requires access to ceiling void.

²⁾ Only for ST, CB.

LEGEND



Accessories for emergency lighting luminaires

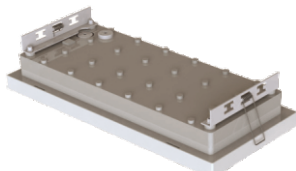
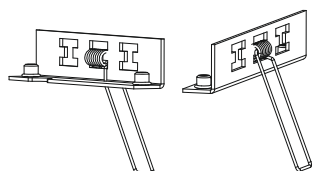


Mounting kit C101

Mounting kit designed to hang down luminaires PRYMAT, PRIMOS and HERKULES-P.

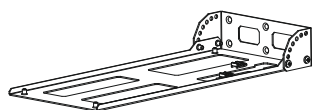
ATTENTION!

Strings or chains should be ordered separately.



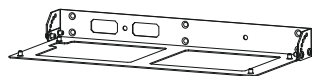
Mounting kit C105

Mounting kit designed for mounting luminaires PRIMOS, PRYMAT and HERKULES-P in suspended ceilings.



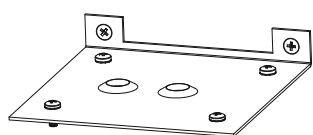
Mounting kit W121

Wall mounting kit designed for luminaires PRIMOS, PRYMAT and HERKULES-P. It allows mounting luminaire on the wall perpendicularly to it and for folding luminaire from the level 15, 30, 45, 60, 75 or 90 °. Using a mounting W121 luminaire is directed to the shorter side of wall.



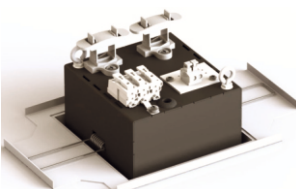
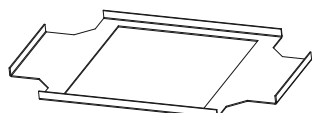
Mounting kit W122

Wall mounting kit designed for luminaires PRIMOS, PRYMAT and HERKULES-P. It allows mounting luminaire on the wall perpendicularly to it and for folding luminaire from the level 15, 30, 45, 60, 75 °. Using a mounting W121 luminaire is directed to the longer side of wall.



Mounting kit W131

Mounting kit designed for surface mounting of KWADRA luminaire on the wall in the way that the light is directed to the floor. It is recommended to use luminaire with SIDE type photometric body with mounting kit W131.



Reinforcement for soft ceilings

Addition designed for recessed execution of KWADRA luminaire. It allows mounting of luminaire in soft ceilings eg. in fiberglass ceilings.

Strings , chains

Steel strings, galvanized chains DIN 5685-A – designed for mounting pendant luminaires.

Chains available in dimension DIN 5685-A 1,5x12.

