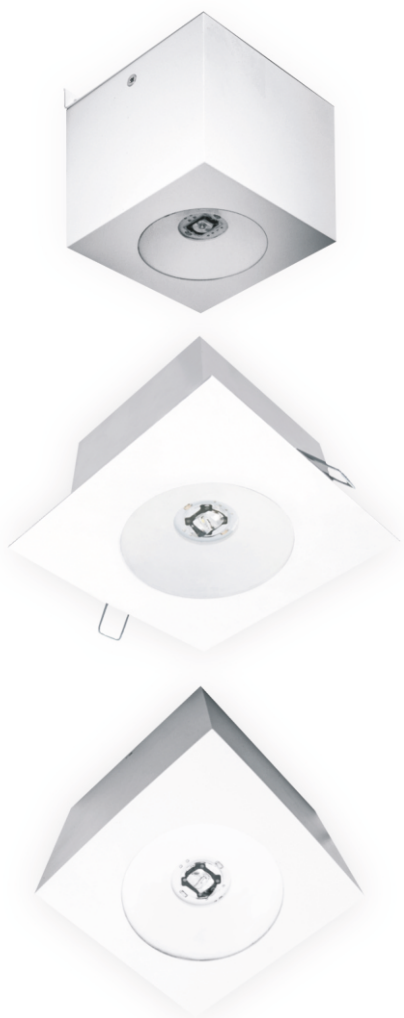




CE IP20



### General purpose

Kwadra LED, equipped with LED light source, is a highly efficient luminaire designed for emergency lighting. Its main task is to illuminate emergency escape routes, emergency escape exits and rooms in public facilities, work places, etc. It is compatible with all emergency lighting systems offered by Hybryd. Different versions available including optics, LED type and mounting type: surface mounted or recessed.

### Technical data

CATEGORY		VALUE
Power supply		230V 50-60Hz
Power consumption	maintained	<14VA
	non-maintained	<5VA
Protection class		I
Radio noise		Level N
Protection degree		IP20
Light source		LED Module <sup>1</sup>
Moc źródła światła		3W
Luminous flux	ROAD	260 lm
	ROAD PLUS	
	SIDE	
	AREA	225 lm
Light source lifespan		>50.000h
Emergency work time		1h; 2h; 3h
Accumulator type		Ni-MH HT
Accumulator capacity		1,6Ah; 2,1Ah; 4,0Ah
Accumulator voltage		4,8V
Recharging time		24h
Ambient temperature		+10°C - +35°C
Connector		0,5 - 2,5mm <sup>2</sup>

<sup>1)</sup> - unchangeable light source

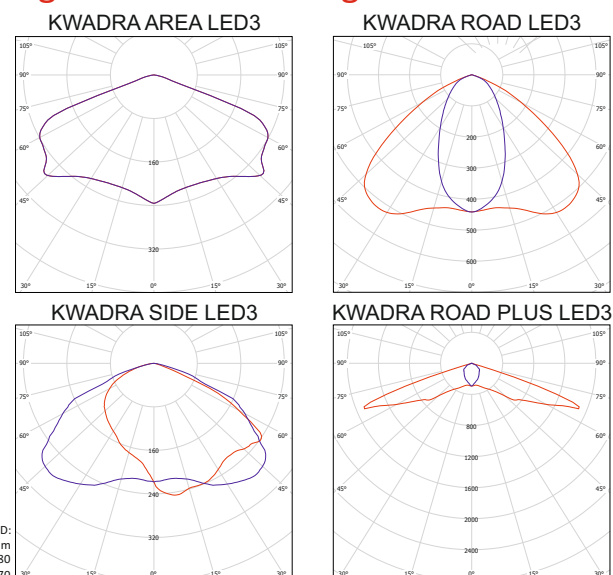
### Casing

Body material - steel  
Casing colour - white, black, silver

### Available versions

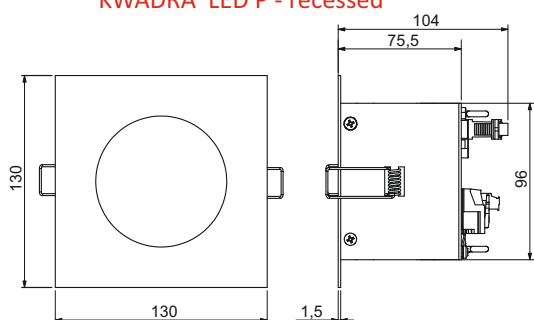
Please check the details on next pages.

### Light distribution diagrams

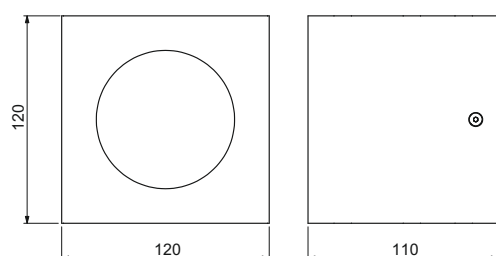


### Dimensions

KWADRA LED P - recessed



KWADRA LED N - surface mounted



## Versions - testing, monitoring

**ST** = Standard - emergency work test executed by turning off power supply

**AT** = Autotest - automatic and periodic test execution:

TEST A - lamp efficiency test, monthly;

TEST B - emergency work time measurement, annually;

**CT** = Centraltest - communication with the central unit or PC, full addressing of the luminaires, luminaires visualisation, system status reporting, many testing options, manual testing;

**TS** = Test System - communication with H-101TS central unit, many testing options, manual testing with the use of H-101TS central unit

**CB** = Central Battery - 220V DC power supply from central battery, built-in LED 220VDC ballast and LED module;

**BU** = Buffer Supply - luminaire adapted for 12-24V DC buffer feeders, built-in LED 12-24V DC ballast and LED module.

## Functions

1. Automatic power supply switch: basic work/emergency work. (only ST, AT, CT and TS).
2. Luminaire and accumulator state indication (only ST, AT, CT and TS).
3. Supervision of 230V power supply voltage and accumulator condition (only ST, AT, CT and TS).
4. Deep accumulator discharge protection (only ST, AT, CT and TS).
5. Automatic test execution (only AT, CT and TS).
6. Light source work supervision.

## Indication

The luminaire condition is indicated by LED. There is no LED indication during emergency mode:

Green - accumulator condition (only ST, AT, CT, TS)

Red - luminaire condition (only AT, CT, TS).

More details described in product manuals.

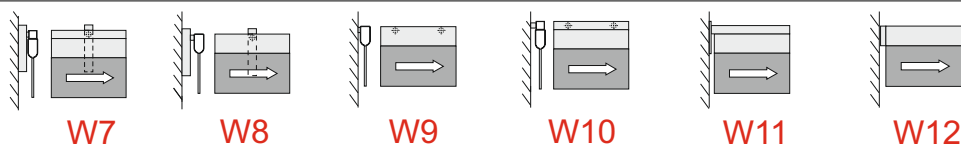
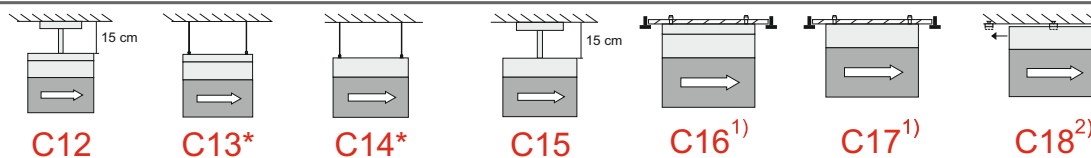
## Lighting versions

**Maintained (M)** - basic lighting provided all the time (uses 230V); in case of power supply failure switches automatically into emergency mode (accumulator).

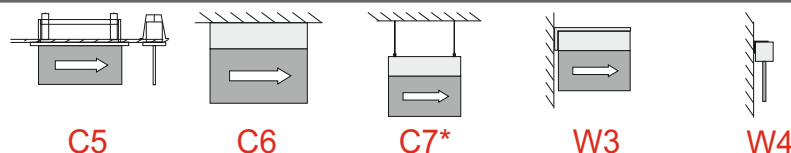
**Non-maintained (NM)** - standby mode as a standard (no lighting); in case of power supply failure switches automatically into emergency mode (accumulator).

# Mounting types

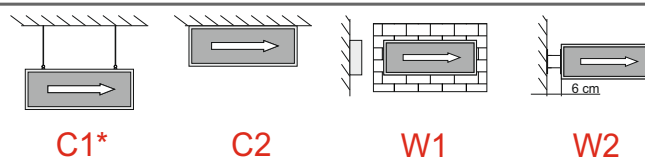
## PROFIL



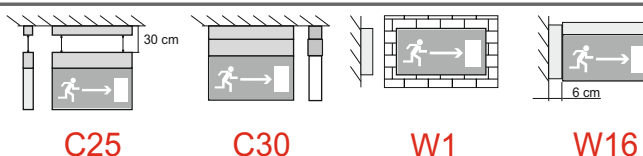
## CRYSTAL



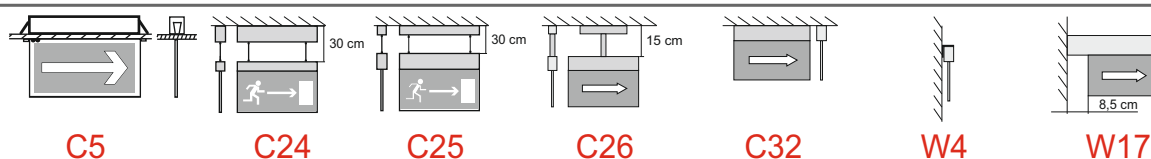
## ALU



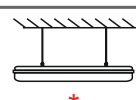
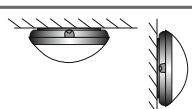
## SPARK



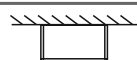
## PROFILIGHT



## H-207 TELESTO



## H-207 TCW060 & 216

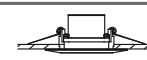


## KWADRA ORBIT LED

KWADRA ORBIT LED



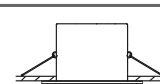
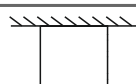
OWA ATOM LED OWA POWER LED



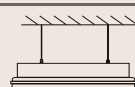
## OWA LED

## KWADRA N

W131



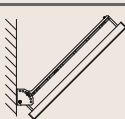
## KWADRA P



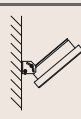
C101\*



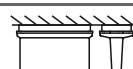
C105



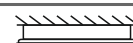
W121



W122



PRYMAT DW



## PRIMOS

## PRYMAT

ACCESSORIES  
(ordered separately)

## LEGEND

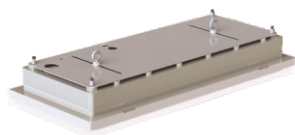
- CONSTANT CEILING
- SUSPENDED CEILING
- MODULAR CEILING

\* Strings or chains available on request.

<sup>1)</sup> Requires access to ceiling void.

<sup>2)</sup> Only for ST, CB.

# Accessories for emergency lighting luminaires

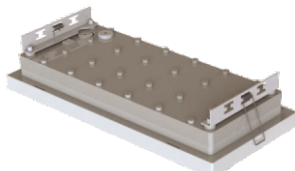
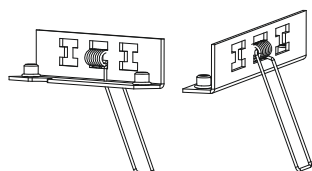


## Mounting kit C101

Mounting kit designed to hang down luminaires PRYMAT, PRIMOS and HERKULES-P.

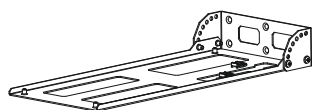
ATTENTION!

Strings or chains should be ordered separately.



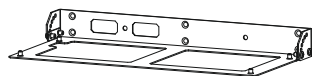
## Mounting kit C105

Mounting kit designed for mounting luminaires PRIMOS, PRYMAT and HERKULES-P in suspended ceilings.



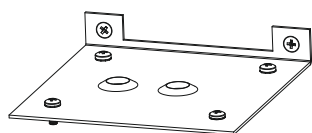
## Mounting kit W121

Wall mounting kit designed for luminaires PRIMOS, PRYMAT and HERKULES-P. It allows mounting luminaire on the wall perpendicularly to it and for folding luminaire from the level 15, 30, 45, 60, 75 or 90 °. Using a mounting W121 luminaire is directed to the shorter side of wall.



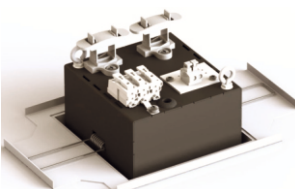
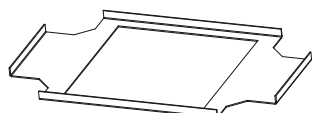
## Mounting kit W122

Wall mounting kit designed for luminaires PRIMOS, PRYMAT and HERKULES-P. It allows mounting luminaire on the wall perpendicularly to it and for folding luminaire from the level 15, 30, 45, 60, 75 °. Using a mounting W121 luminaire is directed to the longer side of wall.



## Mounting kit W131

Mounting kit designed for surface mounting of KWADRA luminaire on the wall in the way that the light is directed to the floor. It is recommended to use luminaire with SIDE type photometric body with mounting kit W131.



## Reinforcement for soft ceilings

Addition designed for recessed execution of KWADRA luminaire. It allows mounting of luminaire in soft ceilings eg. in fiberglass ceilings.

## Strings , chains

Steel strings, galvanized chains DIN 5685-A – designed for mounting pendant luminaires.

Chains available in dimension DIN 5685-A 1,5x12.

